

The Australian Screen Editors Guild is dedicated to the pursuit and recognition of excellence in Screen Editing and all forms of motion picture post production.

## **ASE TECHNICAL EXCELLENCE AWARD GUIDELINES 2024**

The ASE is introducing the Technical Excellence Award to acknowledge the outstanding work of people in the Editorial Department such as Assistants, Post Supervisors, VFX editors, Online Editors and Colour Graders.

We want to see innovative workflows and techniques that showcase the best our industry has to offer. It could be a new way to simplify a time intensive task, or it could be a large and complex production with many moving parts.

The Technical Excellence Award is considered to be of equal standing to our other Editing awards. The nominees will be announced alongside our other categories and the winning application will receive the same trophy.

The nominees of this award will be encouraged to present their workflows at the inaugural ASE “Cutting It” Editing festival that will occur on the same day as the Ellies.

It is hoped that by celebrating and highlighting the work of our talented and dedicated practitioners, we can foster greater collaboration and keep our membership updated on the latest industry practices.

### **ELIGIBLE PRODUCTIONS:**

In order to enter the Technical Excellence Award the submission will revolve around a production that must include an “Picture Editing” phase at some point in it’s workflow.

All entries must have had their first festival screening, theatrical release, television, VOD, online (or similar) or DVD release between 1st August 2023 and 31st July 2024.

There is no limitation to the type of production. For example it could be a feature film, reality program, or commercial.

## AN APPLICATION SUBMITTED BY A TEAM:

We know productions often take teams and we want to acknowledge everyone involved. To keep things clear we have separated the roles into three categories.

### **Project Lead**

- The Project Lead designed the workflow and managed its implementation.
- The Project Lead must be a Full Financial member of the ASE.
- The Project Lead will be awarded the Ellie Trophy should the application win.
- There can be more than one Project Lead. They must all be Full Financial Members. The ASE will only supply one trophy, there will be an option to purchase additional trophies in the application.

### **Key Crew**

- Key Crew were involved in actioning the workflow.
- Key Crew must be either Full or Associate members of the ASE.
- Key Crew will be presented with a certificate should the application win.

### **Additional Crew**

- Additional Crew do not need to be members of the ASE.
- Additional Crew will receive an acknowledgement but are not eligible for a trophy or certificate.

You can enter either as an individual or as a small/large team. Each application only needs one Project Lead as a minimum. The person submitting does not need to be the Lead.

You can only be attached to one entry per year as the Project Lead. You can be Key or Additional Crew across multiple entries.

If you are a production company or post house who wants to nominate your technical team for a project, you are more than welcome to do so.

The ASE expects a fair allocation when determining the roles of team members. If a complaint is raised, the application may either be changed or disqualified at the ASE's discretion. To avoid complications the ASE highly recommends running your application past all relevant parties.

## APPLICANTS WILL NEED TO SUPPLY:

1. A list of the team members broken down into Lead, Key and Additional roles as described above. Each should break down what each team member was responsible for. Team members will include their ASE membership number.
2. A flowchart diagram that articulates the work flow and locates the mandatory “Picture Editing” phase. *An example can be found at the end of this document.*
3. A written statement that explains the issues, problems, or technical hurdles encountered on this production (500 words max).
4. A written statement that explains the workflow and techniques used to create the solution (500 words max).
5. The release / on air date of the production.
6. A letter from the Producer or Supervisor stating that the above team were responsible for creating and implementing this workflow.
7. (OPTIONAL) Provide any screenshots, clips or supplementary material to aid the judges in understanding the problem/solution. (1 A4 Page)
8. (OPTIONAL) Clip or trailer of production – NOTE: this is not judged, it’s to provide a little more context for the judges. For video clips the ASE recommends Dropbox but Vimeo and YouTube are also acceptable platforms.
9. The application fee of \$77. This fee is GST inclusive and payable to the ASE at the time of submission.

The Technical Excellence Judging Panel may request a follow up interview to answer questions they have or ask Applicants to submit further material. It is in an Applicant’s best interests to comply with these requests in a timely manner.

### **To apply for the Technical Excellence Award please go to:**

<https://australianscreeneditors.wufoo.com/forms/ase-technical-excellence-award-2024/>

The deadline for applications is **Sunday 11th August 2024**. Submissions will not be accepted after this date.

If providing video clips or trailers then it is the responsibility of the Applicant to provide web links and ensure that they play back without interruption. The link must remain active until judging is complete, on Sunday 13th of October 2024.

## THE JUDGING PROCESS:

The Technical Excellence Award judging panel will comprise of three individuals from backgrounds relevant to this award. This may include Assistant Editors, Online Editors, Post Supervisors, VFX Editors, or Colourists.

As this is the first year of this award and it is very different to the other categories, we are waiving the usual requirement that judges be former nominees of the ASE Awards.

The Judges will use the following criteria to assess each application. You should keep these questions in mind when composing your two written submissions.

Each criteria is weighted evenly and your submission does not necessarily need to be exemplary in all three. You may find that your application is strongest when it favours one criteria more than the others. However the judging panel will want at least some consideration given to each of these three points.

### **Innovation**

- Is the submission innovative in its approach to solving the issues the production faced?
- How does the workflow evolve or eschew standard conventions?
- Are there meaningful gains to this approach compared to a more traditional practice?

### **Difficulty**

- How difficult was the problem to overcome?
- How impressive was the skill level required to complete the project?
- Does the workflow present a robust and comprehensive solution to the issues?

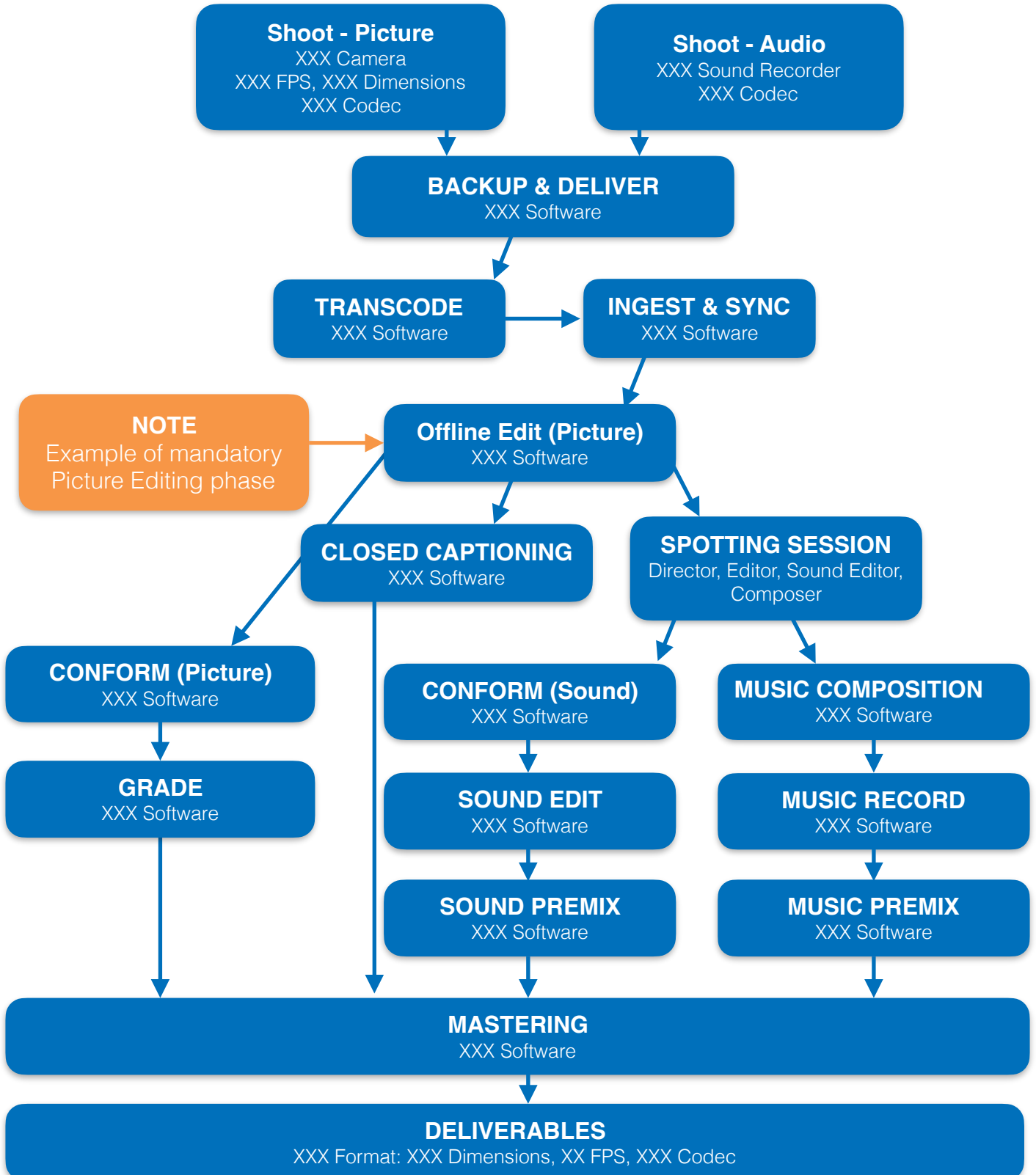
### **Efficiency**

- Does the workflow precisely and efficiently solve the issues the production faced?
- Does the workflow simplify complex tasks and make them easier to execute?
- Does it appear that a more simple or efficient solution could have been found?

**If you have any questions regarding this award or how to apply, you can contact us at [office@screeneditors.com.au](mailto:office@screeneditors.com.au)**

## WORKFLOW FLOWCHART EXAMPLE

The following is a basic example of a workflow flowchart. It gives an overview of the workflow as well as identifying the “Picture Editing” phase of the project. The purpose of this flowchart is to help the judges understand where the described techniques fit in the overall picture. Feel free to create one that makes sense for your application and add notes to highlight key sections of your application.



## Change log:

27/05/24 The guidelines for the Technical Excellence Awards are established.